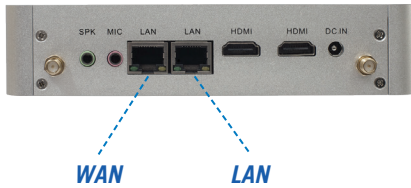
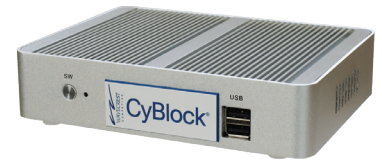


CyBlock® Mini Appliance | Setup Guide

Enterprise-Level Web Filtering and Reporting Hardware
Manage Internet use in your organization



STEP 1: Connect CyBlock Mini Appliance.

- Connect the mini appliance to your LAN (local area network) as if it were another computer.
- Connect the right-side LAN port on the mini appliance to a network Hub using an Ethernet cable.

STEP 2: Connect your computer to the mini appliance.

This step is similar to configuring a single computer to your network. You will need to configure:

- IP address
- DNS
- Default gateway

Configure your computer. Record your current IP address information BEFORE making the changes below, as you will want to change them back after you have successfully configured the mini appliance.

- From the Start menu on your computer, open **Settings** and click **Network & Internet** and then **Network and Sharing Center**.
- Under **View your active networks**, click **Local Area Connection**.
- The Local Area Connection Status screen ([Figure 1](#)) will appear. Click the **Properties** button.
- Select **Internet Protocol (TCP/IP)** ([Figure 2](#)), and then click the **Properties** button.
- Select **Use the following IP address** ([Figure 3](#)).
- In the **IP address** field, type “10.40.10.2.”
- In the **Subnet mask** field, type “255.255.255.0.”
- Click **OK**, and then restart your computer.

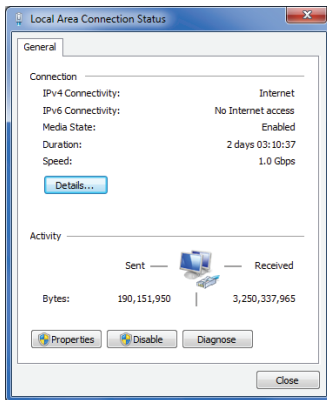


Figure 1: Local Area Connection Status

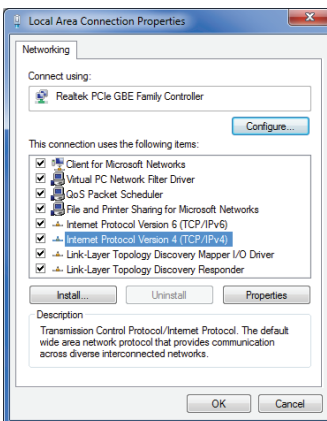


Figure 2: Local Area Connection Properties

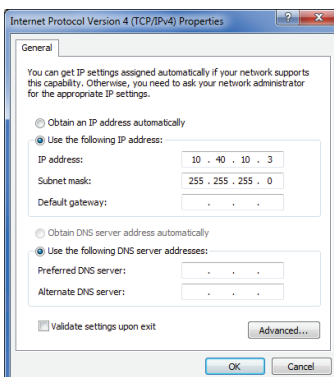


Figure 3: Internet Protocol Properties

Connect to the mini appliance browser interface. When your computer comes back up, open a browser. In the address bar, type “http://10.40.10.3” and press ENTER. You can now access the mini appliance through this interface ([Figure 4](#)). Enter the following information to log on:

- **Logon:** *admin*
- **Password:** *password*

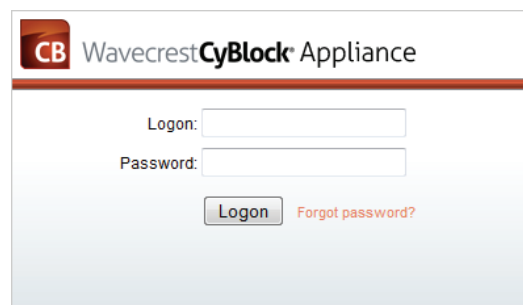


Figure 4: CyBlock Logon Screen

Network Configuration	
Host Name:	cyblock
Bridge Configuration	
IP Address:	192.168.1.3
Subnet Mask:	255.255.255.0
Default Gateway:	192.168.1.1
DNS Configuration	
DNS Domain:	company.lan
DNS 1:	192.168.1.10
DNS 2:	
DNS 3:	
<input type="button" value="Submit"/>	

Figure 5: Network Settings Screen

STEP 3: Configure the mini appliance.

Now that you have logged on to the mini appliance browser interface, go to the **Settings - Network - Configuration** screen (Figure 5).

- In the **Host Name** field, enter a “friendly” name for the mini appliance.
- Next, enter an IP address that fits into your network IP scheme for CyBlock Mini Appliance.
- Enter the subnet mask.
- Enter the default gateway IP address of your network.
- In the **DNS Domain** field, enter the DNS domain name (including suffix).
- In the **DNS 1** field, enter the IP address of your primary DNS server.
- If you have a secondary DNS server, enter that IP in the **DNS 2** field and so forth.
- Click **Submit** to apply the configuration.

STEP 4: Configure your computer back to its original IP scheme.

Using the IP information you recorded before making the changes to connect to the mini appliance, change your computer back to its original IP scheme using the instructions in **STEP 2**.

STEP 5: Put the mini appliance into production.

The mini appliance can be put into production in the following ways:

Bridge Mode

In Bridge mode, the mini appliance works as an inline device between your network and the Internet. It acts like a bridge, allowing Internet traffic to flow transparently through it. You want to place CyBlock Mini Appliance in front of all computers that you want to filter and behind your firewall/cable modem. Using an Ethernet cable, plug your filtered internal network traffic (LAN) into the right-side LAN port. Next, plug your unfiltered traffic (WAN) into the left-side LAN port.

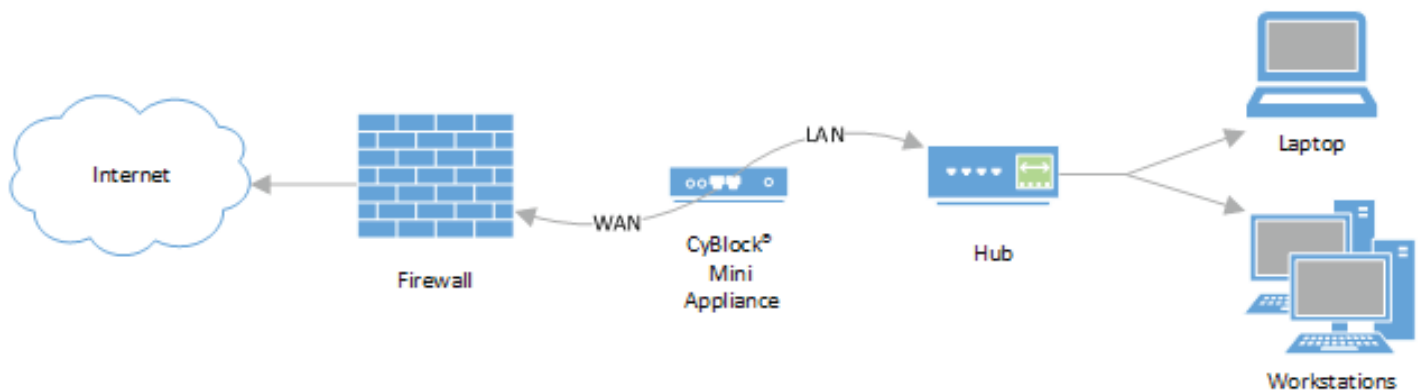


Figure 6: Mini Appliance in Bridge Mode

Proxy Mode

In Proxy mode, traffic is sent to CyBlock Mini Appliance as proxy requests. CyBlock Mini Appliance then determines if the request should be blocked or allowed based on your filtering policies. Connect the mini appliance similar to your computer. Using an Ethernet cable, plug the right-side LAN port on the mini appliance into a network Hub.

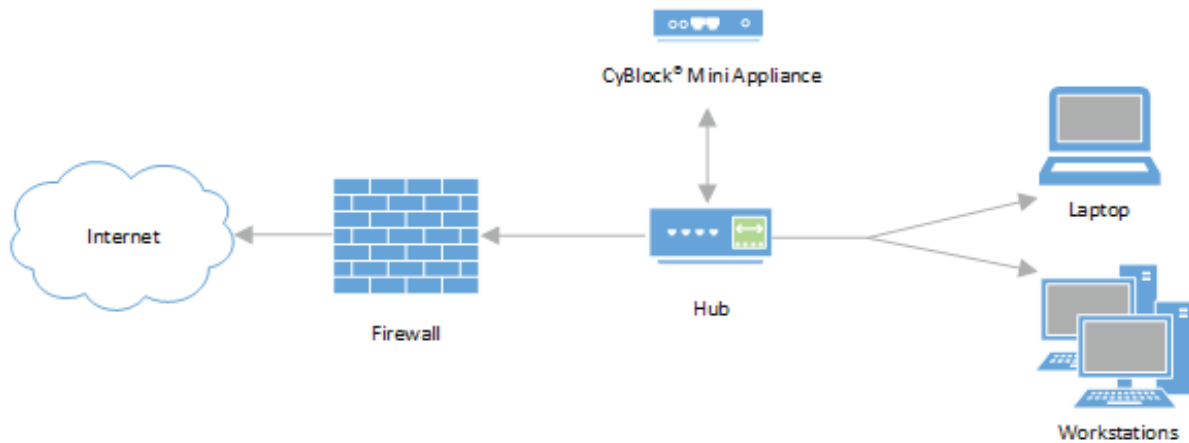


Figure 7: Mini Appliance in Proxy Mode

For more information and technical specifications, see our [CyBlock Mini Appliance Datasheet](#).

What's Next?

The CyBlock Mini Appliance client software can be installed for protocol authentication, which can be done centrally. By default, the mini appliance allows for local reporting, but you have the option to install and configure Cyfin for remote reporting. These instructions are located in the product manual. Access the product manual from the mini appliance interface by going to **Help - User Guide**.

Visit our knowledge base at kb.wavecrest.net.



Wavecrest Computing, Inc.
904 East New Haven Avenue
Melbourne, FL 32901 USA

Toll-Free: 877-442-9346 (U.S. & Canada)
Direct: 321-953-5351, Ext. 4
International: 001-321-953-5351 (outside U.S. & Canada)
E-Mail: support@wavecrest.net